

# Grenadier Wolfbox Dashcam Installation Guide





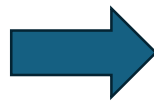


## Remove Trim

Remove table and trim from large back door. If you have the table, note that the long bolts and larger spacers are for the lower holes. They will fall out as the table is removed.



Remove trim from right hand side rear cargo.



## Rear Camera Cable

The cable that runs from the top of the mirror to the rear camera should be run from the front to the back as the connector on the camera end is a right-angled stereo type of jack that may catch on things unless well wrapped in tape. The cable can though be run either way.

If running from front to back, remove part of the right-hand door seal at the top of the doorway so that you can access the ceiling trim.



Remove the plastic bracket that supports the sun visor.

Using the coat hanger wire, pull the cable from the mirror, via the sun visor bracket hole above the door seal. Be very careful NOT TO DAMAGE THE AIR BAG behind and above the door seal.

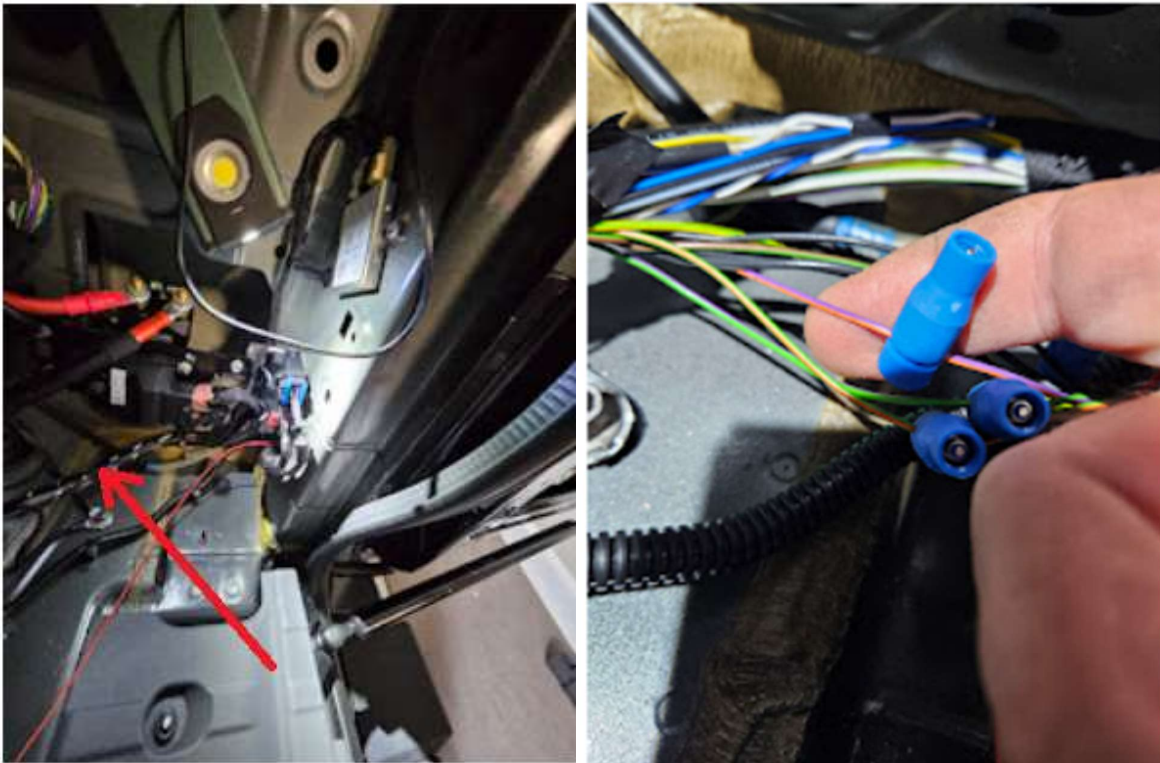
Using the tongue and groove, pull the cable from the front to the back of the car and down the corner to the cargo area but in the void behind the pillar when complete.



Behind the trim in the rear corner are several wiring looms – BEWARE of the positive lead on the left arrow below as it is live unless batteries are isolated. The thin red wire to the right is the extension of the Wolfbox wire that will be connected to the purple/orange lead.



The loom required is indicated below by a red arrow below. Carefully unwrap and locate purple/orange wire.



Prepare for the connection of the reversing lead, however, is best to complete the cable runs up to the camera on the rear door first so that excess cable can be minimised. Note that the red wire on the supplied cable for the rear camera needs to be extended as it is too short.



Prepare rear door for the cable run within it.

Remove rubber boot of grommet where it enters car body at door hinge.

Remove the rubber boot of the grommet to the base of rear door, pull out the cable clips on the cable loom that is in the rear door to give the loom room to move.

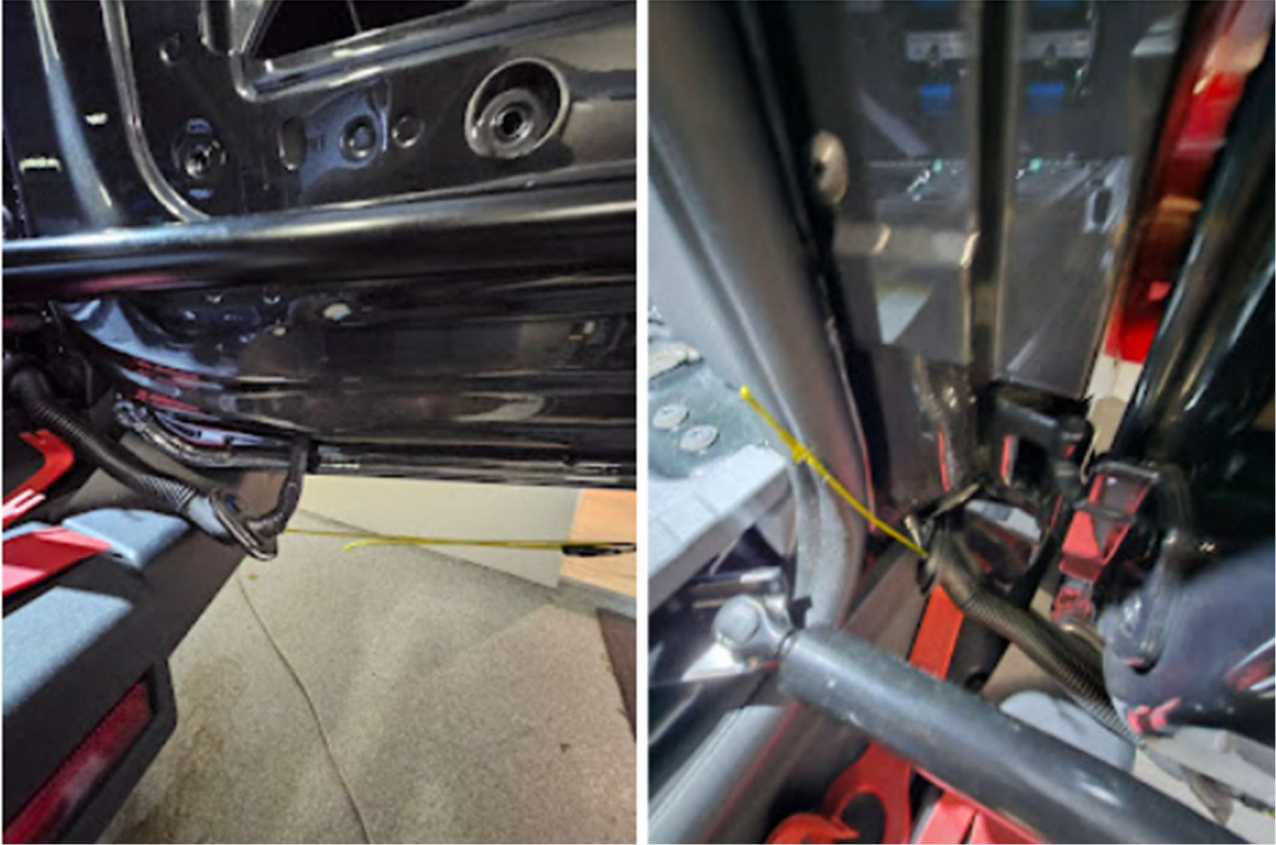


Remove the tape on the neck of the rubber grommet that was inserted at base of door carefully with a blade. Roll down the rubber neck of the grommet.

Lubricate coat hanger with silicone grease.

Using the coat hanger, pull through the cable from the cargo area via the grommet hole where the loom exits the car into the rear door, leaving enough red wire to later connect to the purple/orange lead later. The red wire as supplied is too short and will need to be extended prior to pulling it through the grommet hole. Pull spare cable though as required. Be careful not to loop the cable around the door piston.

Push the coat hanger wire through the grommet, tape the cable to the coat hanger and pull back through the grommet.



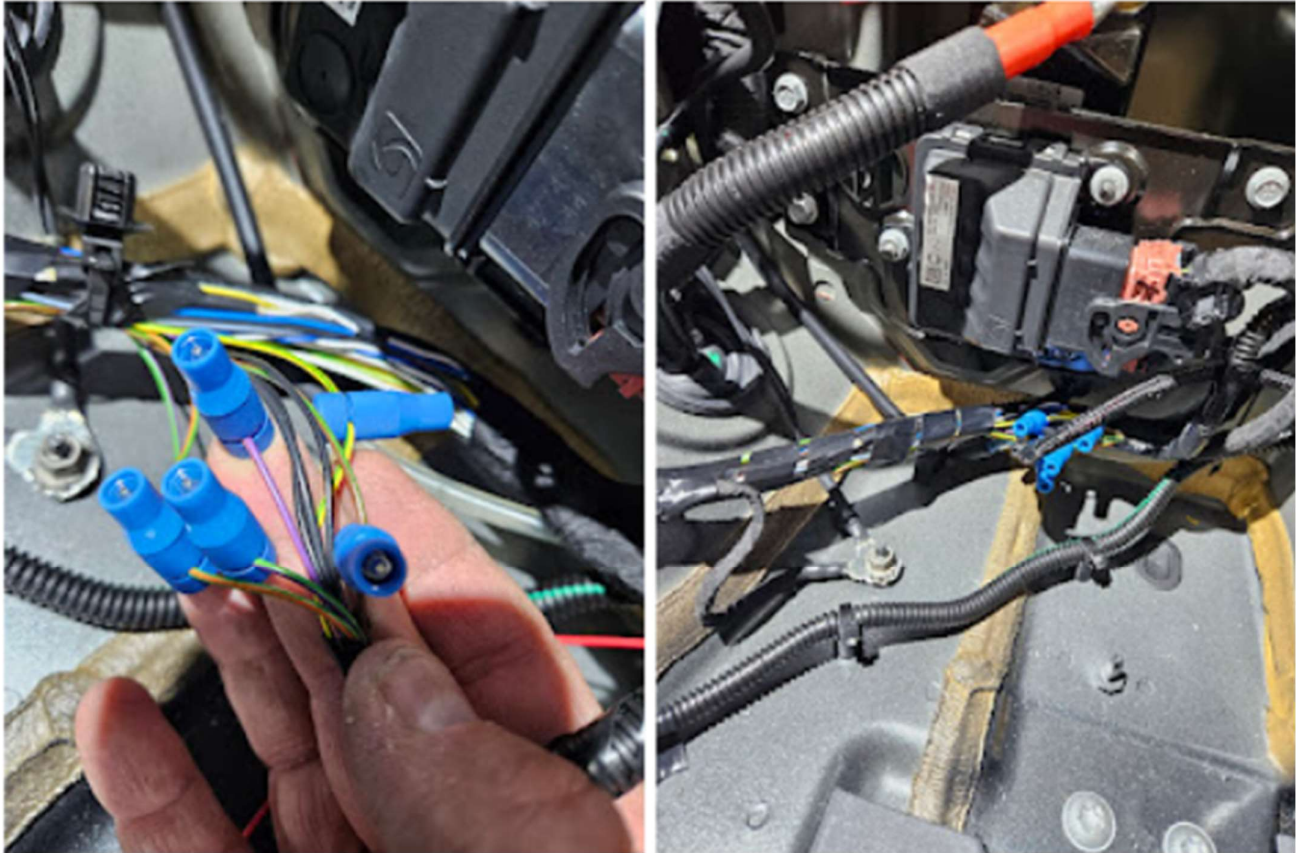
Pull through in a similar manner to the top grommet on the door following the existing wiring loom.



Leave camera loose but at the required position so that the cable lengths can be correctly ascertained. Secure all cables, replace cable stays on loom, replace grommets. Pull excess cable gently back through to the cargo area.



In the cargo area connect the red lead to the reverse lead (purple/orange), tape up loom. The additional blue connectors below were to facilitate testing to locate the reverse cable and can be ignored.



Excess wire (after connecting cable at front of car to mirror and gently pulling it taught in the cargo area) can be looped and secured in behind the corner panel where it comes down from the ceiling into the cargo area as indicated by the arrow.



Test the rear camera by running a USB cable to the camera and putting the car in reverse. If working as expected, then the cables can be secured and the cargo area and door can be re-constructed, and camera fitted to door trim. When mounting the camera use 3M double sided tape as the tape supplied by Wolfbox is useless. Try to place the camera such that the rear-facing lens is not obstructed by the rear demister filament.



Note that fitting the rear table is difficult without an extra pair of hands as spacers must be held in place whilst bolts fitted. The longer bolts and spacers are for the 3 bottom holes.



## Power to Mirror

Due to the connections to the mirror being in line across the top of the mirror, I chose to have the rear camera and GPS cables routed to the right side of the car and the power to the left.

Power to the mirror can be run to the left or right pre-wired sources in the footwells or be run to the fuse box under the steering column. Use the same technique as for the rear camera cable run to get the cable from the left side of the mirror to the left side door seal. The cable as supplied is designed to be fitted to a cigarette lighter connector. I replaced this cable with a 2m right angle cable and connected it into USB sockets that I wired to front left footwell that are switched to INT1 on the overhead panel.



Link for cable [https://www.amazon.com.au/dp/B07VJN9YQM?ref=ppx\\_yo2ov\\_dt\\_b\\_product\\_details&th=1](https://www.amazon.com.au/dp/B07VJN9YQM?ref=ppx_yo2ov_dt_b_product_details&th=1)

Remove the sun visor.

Pull down the door seal.

Using the coat hanger pull the cable from the mirror to the sun visor mounting bracket hole.

Using the coat hanger pull the cable from the sun visor mounting bracket hole to above the door – BE CAREFUL NOT TO DAMAGE THE AIRBAG.

The USB power cable is then run down the door seal and behind the trim to the auxiliary power in the footwell where a USB socket has been wired in previously.



## GPS Cable

From the right-hand side front door pull the cable through towards the mirror as the GPS receiver can't be removed from the cable:

Remove the sun visor.

Pull down the door seal.

Using the coat hanger pull the cable from the door ceiling trim to the sun visor mounting bracket hole – BE CAREFUL NOT TO DAMAGE THE AIRBAG.

Using the coat hanger pull the cable from the sun visor mounting bracket hole to above the mirror.

Direct the cable down behind the door seal such that it can be mounted on the dash.

The corner trim pulls out towards the seat using trim tools.



GPS sensor can be mounted on the dashboard.