

# DAILY

**55S17H W**  
**NEW DAILY EURO VI (FIC 3.0I)**



The information in this literature is intended to be of a general nature only. IVECO reserves the right to modify or change specifications at any time.

**IVECO**



55S17H W

FDP:

A5WC

MARKET: I310

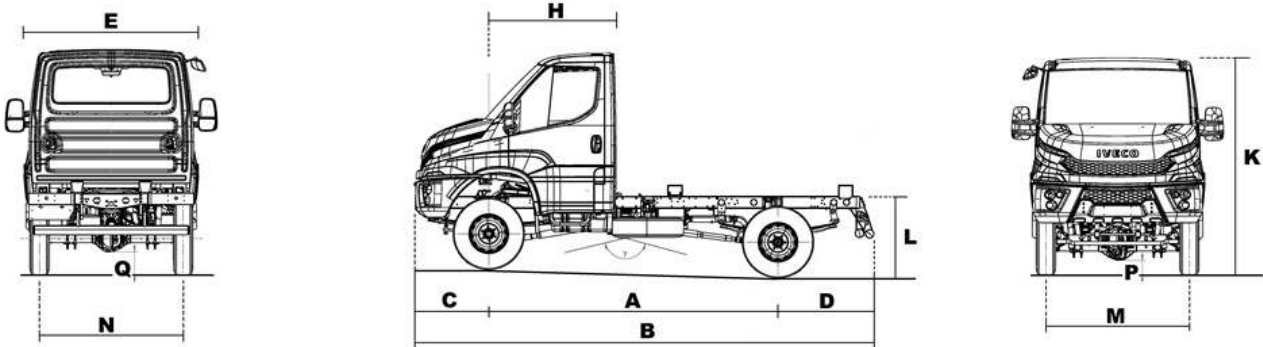
MOD:

55S17H W

List of linked VCB

VCB Code	Gearbox	Wb	Cabin	Drive
85HEIFBI	2840.6 OD	3050	LSTS	LHD
85HEIMBI	2840.6 OD	3400	LSTS	LHD

### Weights & dimensions



3050      3400

Max length (B)	4920	5420
Overall length (over RUP) (B)	2056	2056
Front axle to back of cab (F)	1491	1494
Frame height end of frame, unladen(L)	1068	1070
Frame height front axle, unladen	907	906.6
Frame height rear axle, unladen	1020	1020
Front overhang (C)	900	900
Rear overhang (D)	970	1120
Minimum ground clearance (front)	255	255
Minimum ground clearance (rear)	255	255
Overall height to top of cab, unladen(K)	2606	2597
Turning diameter kerb to kerb	12200	13406
Turning diameter wall to wall	13226	14434
Front track (M)	1670	1670
Rear track (N)	1670	1670
Approach angle (°)	48	48

### Weights & dimensions

	3050	3400
Departure angle (°)	30	28
Ramp angle (°)	149	153
Left hand drive vehicle drawing	580199886	580199889
Total vehicle kerb weight	2670	2700
Kerbweight - F.A.	1780	1790
Kerbweight - R.A.	890	910
G.V.W. (EC)	5500	5500
Plated weight on F.A. (EC)	2450	2450
Plated weight on rear axle (EC)	3700	3700
Max body & Payload (EC)	2830	2800
Frame width at rear	860	860

#### Notes :

**Weights are standard configuration and include: chassis cab, driver ( 75 Kg.), full fuel tank, oils, tools kit and spare wheel ( if present ).**

**The values of the plated weights/GVW can vary according to the markets and the homologations.**

**Fuelling: 1 tank in plastic, capacity 90 litres, on left side of the vehicle, fuel filter on neck.**

**Steering: hydraulic, wheel diameter: 420 mm, steering column in 3 parts.**

**Daily 4x4 - Front mechanical suspension :**

**Main features for models 35S...W / WD - 55S...W / WD**

**Parabolic suspensions / No. of leaves : 3 + reinforced stabilizer bars ( Ø 24 mm ).**

**Daily 4x4 - Rear mechanical suspension :**

**Main features for models 35S...W / WD - 55S...W / WD**

**Parabolic suspensions / No. of leaves : 4 + reinforced stabilizer bars ( Ø 28 mm ).**

## Model Components

## FCP - MT - 5,5 - 5,5 ton.

## Weights (in general)

GVW (kg)	5500
GCW (kg)	9000

## Notes:

The values of GVW / GCW can vary according to the markets and the homologations.  
The weights are indicated more precisely in the section: "Weights and dimensions"

## FCP - CA - 4X4 - 4x4

## Configuration

Axle Configuration	4 X 4
--------------------	-------

## FCP - VE - CABINAT - Rigid

## Version

Version	CHASSIS CAB
---------	-------------

## FCP - DR - SX - LH drive

## Drive

Left

## FTP - EN - FICFL41 IF - Engine FIC 170hp EuroVI HD VGT

## Engine

Manufacturer	FPT
Position	FRONT
Arrangement	LONGITUDINAL
Cycle	DIESEL
Aspiration type	TC+AFTERCOOLER
Injection type	Unijet common rail - 16 valves
4 Stroke / 2 Stroke cycle	4
No. of cylinders	4
Cylinders layout	IN-LINE
Bore (mm)	95.8
Stroke (mm)	104
Total displacement cm <sup>3</sup>	2998
Exhaust gas treatment	SCR (selective catalytic reduction)
(Torque, generic ref. only. See: "EP")	400

## Engine - Miscellaneous

Injection system	HIGH PRESSURE / COMMON RAIL
Cold starting type	THERMOSTARTER

## Cooling

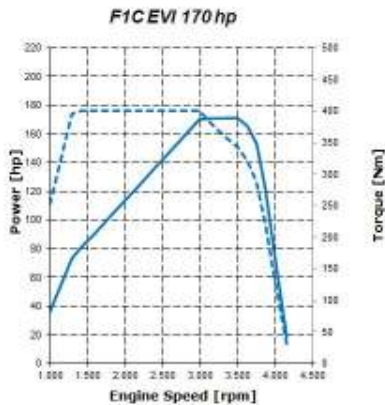
Cooling system	water
Fan type	electromagnetic

## Air intake

Filter type	DRY
-------------	-----

## Model Components

### FCP - EP - 170 EVI - ENGINE FIC EURO VI HD



#### Engine

Power kW	125
Power Hp	170
Rpm at Max Power	3500
Torque Nm	400
Rpm 1/min (min)	800
rpm (min. "Max Torque" eng. speed)	1400
Type of turbocharging	VGT

### FTP - GB - 2840.6 OD - Mech. Gearbox 6speed OverDrive

#### Gearbox

Gearbox Type	SYNCRONIZED
Installation	ENGINE FLANGED
Box material	ALUMINIUM
Dry weight Kg	58
Max input torque Nm	400
No. of gears (forward)	6
No. of reverse gears	1
No. of synchro gears	6

#### Gear ratios

Gear ratio: 1st gear	5.375
Gear ratio: 2nd gear	3.154
Gear ratio: 3rd gear	2.041
Gear ratio: 4th gear	1.365
Gear ratio: 5th gear	1
Gear ratio: 6th gear	.791
Gear ratio: rev. 1st	4.838
Gear Ratio: Last Gear	.791

#### Clutch

Type	Single dry plate
Actuation	PULL TYPE
Adjustment	AUTOMATIC
Outer diameter (inches)	11
Release control	HYDRAULIC

Notes:  
Gearstick located on dashboard with a car type pattern shift.  
PTO: left side provision.

### FTP - TB - 32019 - 32019 Transfer Box SCAM

#### Type

Type	3 shafts
Low speed ratio	3.866

**FDP: A5WC MARKET: I310 Model: 55S17H W****Model Components**

High speed ratio 3.115

notes:

All wheel drive: permanent

Differential lock

Transfer box type : 2 reductions

Percentage of torque distribution - front: 32

Percentage of torque distribution - rear: 68

ON ROAD

Normal Ratio: 1:1

Low Ratio: 1:1.244

OFF ROAD

Normal Ratio: 1:3.115

Low Ratio: 1:3.866

Total ratios: 24, in combination with gearbox ratios

ON / OFF Road lever: selection only at speed = 0 km/h

**FTP - MA - HS6.07 - Motoassale CARRARO****Axle**

Identification code HS6.07

Axle type RIGID

Note:

Reduction type: single

Reduction ratio: 4.87

Differential lock (as an option)

Disk brakes: Ø 297 mm - friction area: 139 cm<sup>2</sup> - No. of cylinders x diameter: 2 x 46**FTP - RA - HS8.09 - Ponte CARRARO****Other features**

Identification HS8.09

Axle Type RIGID

Reduction type single

Reduction Ratio I 4.87

Differential lock

Notes :

Drum brakes : Ø 270 mm - friction area : 335.6 cm<sup>2</sup> - Linings width : 80 mm.**FTP - FS - MECCANICA - Front mechanical suspension****Suspensions**

Springs material STEEL

Notes :

Other features are indicated in the notes of the section " Weights &amp; Dimensions ".

**FTP - RS - MECCANICA - Rear mechan. suspension****Shock absorbers**

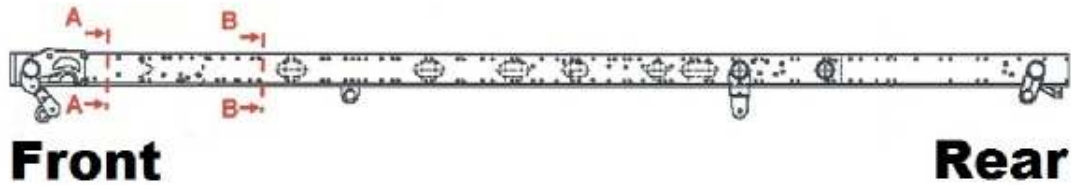
Shock absorbers type HYDRAULIC TELESCOPIC

Shock absorbers no. (rear) 2

## Model Components

Notes :  
Other features are indicated in the notes of the section " Weights & Dimensions ".

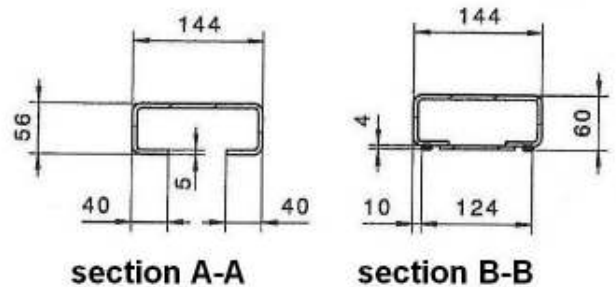
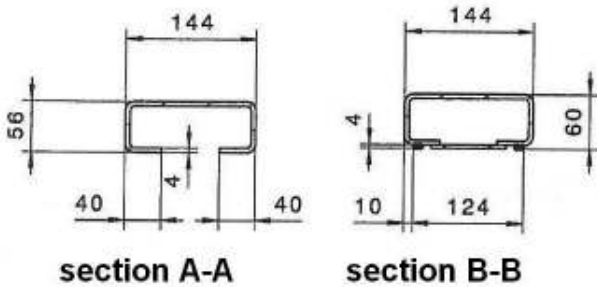
**FTP - FR - SCATOLATO3050 - Frame Scat. SCAM 3050 I44X60**



**35S..W  
wb 3050**

Scale: 1:5

**55S..W  
wb 3050**



### Chassis / W.B.

Wheelbase mm 3050

Note:

For models 35S..W / WD:

in the section AA, the frame is "box type" 144x56x4 (partially open).

In the section BB, the frame is "box type" 144x60x4 (completely closed), including a vertical reinforcement of 124x4

For models 55S..W / WD:

in the section AA, the frame is "box type" 144x56x5 (partially open).

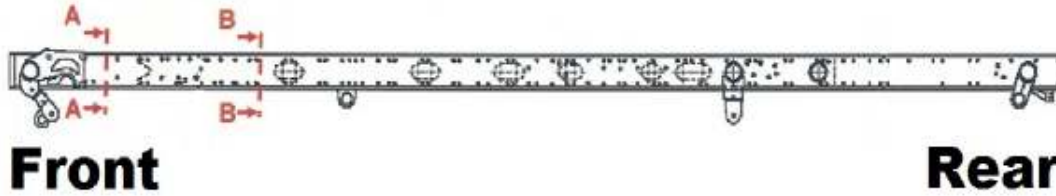
In the section BB, the frame is "box type" 144x60x5 (completely closed), including a vertical reinforcement of 124x4



**FDP: A5WC MARKET: I310 Model: 55S17H W**

**Model Components**

**FTP - FR - SCATOLATO3400 - Frame Scat. SCAM 3400 I44X60**



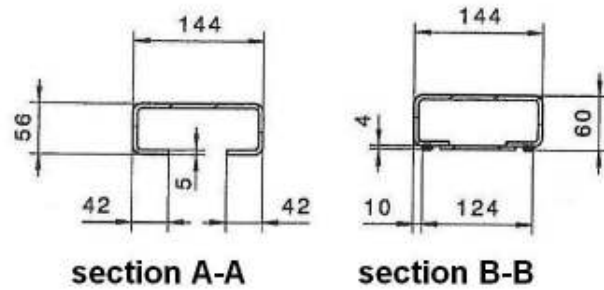
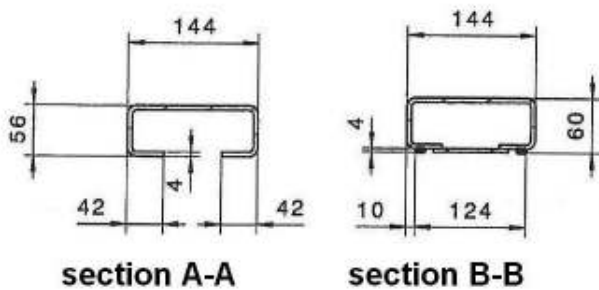
**Front**

**Rear**

**35S..W  
wb 3400**

**Scale: 1:5**

**55S..W  
wb 3400**



**Chassis / W.B.**

Wheelbase mm 3400

Note:

For models 35S..W / WD:

in the section AA, the frame is "box type" 144x56x4 (partially open).

In the section BB, the frame is "box type" 144x60x4 (completely closed), including a vertical reinforcement of 124x4

For models 55S..W / WD:

in the section AA, the frame is "box type" 144x56x5 (partially open).

In the section BB, the frame is "box type" 144x60x5 (completely closed), including a vertical reinforcement of 124x4

**FCS - M0000 - 04488 - SYSTEM ESP 9**

**Braking system**

Features

## Model Components

### Braking system:

Dual circuit configuration; cross split on 29L - 35S / independent from 35C up to 70C.  
 Hydraulically operated with vacuum servo assistance.  
 Full disc brakes with floating calipers with auto wear adjustment.  
 Mechanically controlled parking brake:  
 29L / 35S / 35C (brake calipers)  
 40C / 45 / 50C / 55S / 60C / 65C / 70C (drum)  
 Brake fluid level indicator-front / rear pad wear indicator.  
 Asbestos free pads.  
 EASY interface.

### Notes:

On Daily 2014 the ESP 9 system is standard for all the range. It is the latest evolution among the Electronic vehicle stability controls and is an advanced system for active and preventive safety in all weather and road conditions. Prevents the loss of vehicle control caused by:

High speed  
 Wrong evaluation of the road lay-out  
 Sudden vehicle skid  
 Trying to avoid an obstacle  
 Sudden vehicle steering  
 -----

ESP9 includes ABS (Antilock Braking System), EBD (Electronic Brake force Distribution), ASR (Anti Slip Regulator), MSR (Motor Schlepplmoment Regelung that acts on engine speed to reduce the braking torque in release), Hill Holder (Assited uphill departure), HBA (Hydraulic Brake Assist), LAC (Load Adaptive Control), TSM (Trailer sway mitigation. It detects the presence of a trailer and adapts the electronic stability control strategy in order not to negatively influence the dynamics of the vehicle-trailer system), RMI (Roll Movement Intervention. It mitigates dangerous roll-over situations during highly dynamic driving like e.g. evasive manoeuvre), ROM (Roll Over Mitigation. It mitigates dangerous roll-over situations during almost stationary manoeuvres like circular driving with steadily increasing steering wheel angle).

## FTP - CL - LSTS - Light Cab LH

<b>Cab</b>	
Manufacturer	IVECO
Cab type	SEMI-ADVANCED FIRM
Material	STEEL PLATE
Steps no.	1
<b>Roof</b>	
Roof type	LOW
<b>Dimensions</b>	
Front Area	3.8
Air Penetration Coefficient	.7
<b>Doors</b>	
Front doors no.	2
Front doors type	WINDOW SASH
Front doors opening angle	64°
Window operation	MANUAL ON RIGHT - MANUAL ON LEFT
<b>Rear view mirrors</b>	
Rear view mirr no	2
Mirrors control	MANUAL
<b>Heating</b>	
Fan speed no.	4
Heating control	MANUAL
<b>Windscreen wiper</b>	
No. of windscreen wiper speeds	3
No. of windscreen wipers	2
<b>Seats</b>	
No. of places	3
No. of seats	2
Driver seat adjustme	IN HEIGHT, LENGTH AND BACK INCLINATION

**Model Components**

Passenger seat type TWO SEATS BENCH

**Miscellaneous**

Safety belts points

Sun visors no. 2

Ceiling no. 1

Lighter

CB pre-wiring

**Chassis cab**

Doorway lever

Glove compartment

Cab floor COVERED WITH SYNTHETIC MATERIAL

Monolithic execution

Plastic covering

## Model Components

Remarks:

Anti-corrosion protection includes full cathophoretic dipping with galvanized boxed sections and strategic use of zinc plated panels in vulnerable areas. Protective under seal for all under body cabin area, wheel housing and engine area.

Interior equipment:

Storage compartments with bottle holder, pool cup for mobile phone, arm rests on the doors, shelves in overhead console, shelves at floor level below seats, interior lights, 2 spotlights, 4 loud-speakers, gearshift lever on dashboard.

Passenger's seat:

Fixed, 2 seats bench with drawer under seat.

Floor:

Covered with rubber mats.

Central console:

Storage compartments, glove box compartments on the top of the dashboard, central panel, adjustable air vents, ash-trays, lighter, heating control, cooled compartment (with opt. air conditioning).

Exterior equipment:

Close proximity mirror on passenger's side, steps on both sides, front bumper, mudguard, fog lights.

Handles on both sides, handle on A-pillar (with opt), rear underrun protection, rear lights crossbar. New battery position under driver step.

In cab equipment (it can vary according to the markets / homologations; for a complete list of Daily options please contact local Iveco distributor) :

Indicator lamps, on cluster:

- Parking brake
- Brakes failure
- Directions indicators
- Generic failure
- Seat belts not fastened
- Fog lights
- High beams
- Wing lights
- External lights failure
- Rear fog light(s)
- Open doors
- Fuel gauge
- Tachograph failure
- Coolant temperature
- EOBD
- Engine preheating
- Water in fuel filter
- Clogged air filter
- Clogged fuel filter

Multifunction stalks:

(Left) direction - Wing / Highbeam / Lowerbeam - Headlamp flash - Horn - Front fog lights (right).

New Daily 2014 is equipped with DRL (Daytime Running Lights).

For more security "side light / parking light" switch on automatically at every Key ON, so that the vehicle is more visible by daytime, too. The driver cannot by any means switch them off.

Windscreen wiper with intermittent wipe.

Steering wheel with secure and comfortable grip (ø 390 mm / inclination 42°).

### FCS - D7000 - 02307 - STEEL WHEELS

#### Wheels

Rim type	DISC
Rim material	STEEL

### FCS - I0000 - 20946 - PNEUMATICI 9.5 R 17.5 I29/I27 I20L ON ROAD

#### Tyres

Tyre dimensions	9.5 R 17.5
Load index	I29/I27
Speed index	L = 120 KM/H
Rolling radius m	.409
Rolling circumference m.	2.568

**FDP: A5WC MARKET: I310 Model: 55S17H W**

**Model Components**

Dinamic Radius m	.409
Rolling resistance Coefficient	.007

**FCS - I0000 - 20911 - PNEUMATICI 255/100 R 16 OFF ROAD I34/I28J**

**Tyres**

Tyre dimensions	255/100 R 16
Load index	134/128
Speed index	J = 100 KM/H

Note:

On Daily models 4x4, 255/100 R 16 tyre (for off-road duties) is available as an option

**FCS - D0000 - 08682 - RAPPORTO AL PONTE 4.875**

**Rear Axle Ratios**

Rear axle ratio	4.875
-----------------	-------

**FCS - MPN00 - 00567 - 110 AH BATTERIES**

**Electrics**

Batteries capacity V/Ah	12 V / 110 Ah
-------------------------	---------------

Notes :

Standard battery for Daily :

- No. of battery -----> 1
- Voltage V -----> 12
- Alternator power V/A ----> 14V / 110 A
- Starter power kW -----> 2.2

### Calculations

<b>Tyres :</b>	<b>20946 - 9.5 R 17.5 ON ROAD</b>	<b>Rear Axle Ratio :</b>	<b>8682 - RAPP PONTE 4.875</b>
<b>Efficiency :</b>	<b>0.91</b>	<b>Off Road</b>	

VCB Code	Ratios		Speed Km/h	Max Gradeability												
	2840.6 OD			HS8.09	Total Weights (solo vehicle) (Kg)					Total Weights (vehicle+trailer) (Kg)						
85HEIFBI				5.32	5500						9000					
	I°	5.375	4.875	36.17	100						100					
	L.	.791		24.55							14.45					

<b>Tyres :</b>	<b>20946 - 9.5 R 17.5 ON ROAD</b>	<b>Rear Axle Ratio :</b>	<b>8682 - RAPP PONTE 4.875</b>
<b>Efficiency :</b>	<b>0.91</b>	<b>On Road</b>	

VCB Code	Ratios		Speed Km/h	Max Gradeability												
	2840.6 OD			HS8.09	Total Weights (solo vehicle) (Kg)					Total Weights (vehicle+trailer) (Kg)						
85HEIFBI				6.61	5500						9000					
	I°	5.375	4.875	44.9	100						100					
	L.	.791		19.39							11.44					