

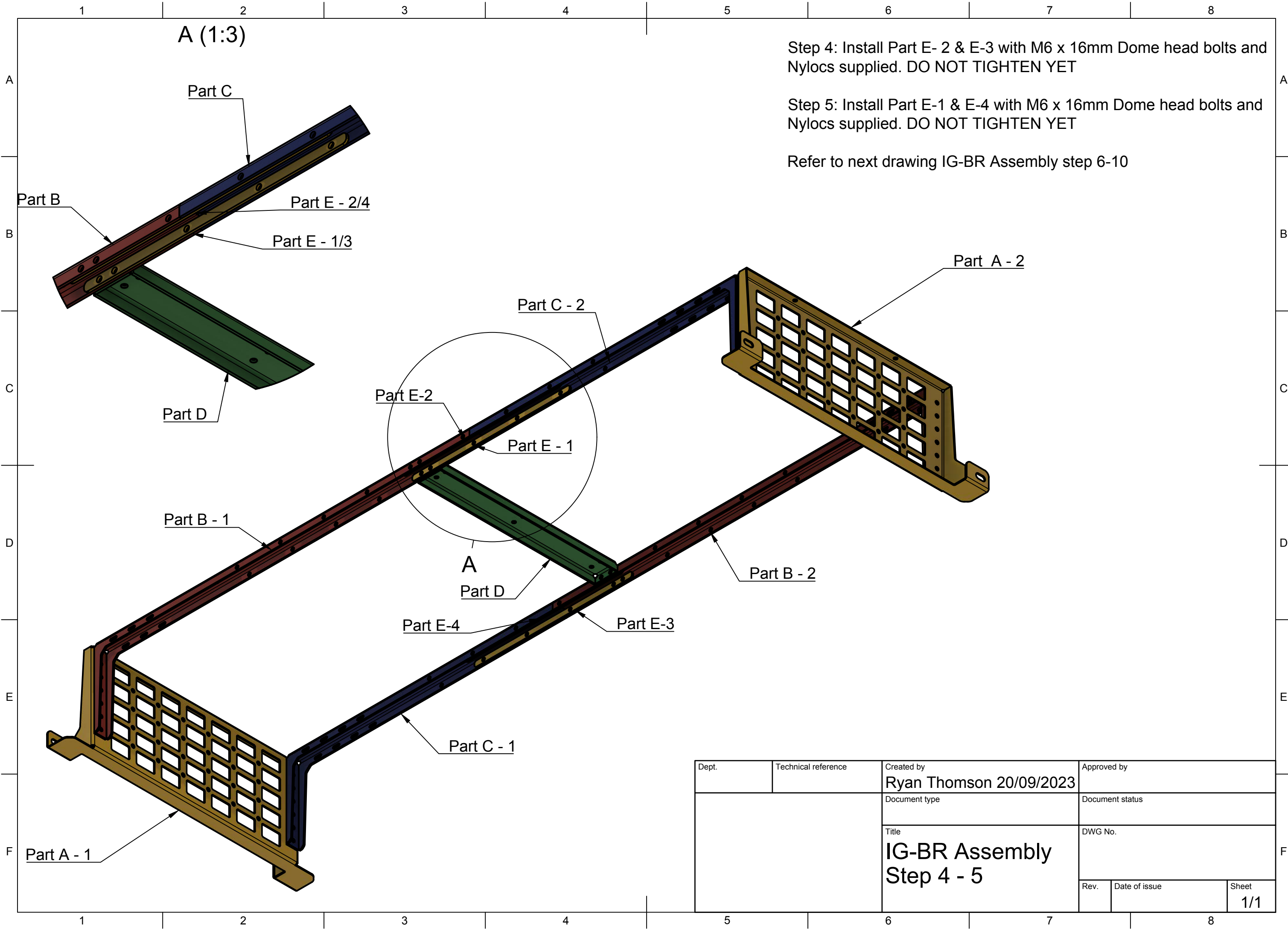
Step 1: Use supplied M6 x 16mm Dome Head bolts and Nyloc Nuts to fasten Part B to Part A. Note there is a set for both the Left hand side and Right Hand Side.

Step 2: Use supplied M16 x 16mm Dome Head bolts and Nyloc nuts to fasten Part C to Part A. Note there is a set for both the left hand side and right hand side.

Step 3: Install Part A into vehicle. Remove existng tie down points above wheel arch to do so, re use factory bolts.

Refer to next drawing: IG-BR Assembly Step 4 - 5

Dept.	Technical reference	Created by Ryan Thomson 20/09/2023	Approved by	
		Document type	Document status	
		Title IG-BR Assembly Step 1 - 3	DWG No.	
	Rev.	Date of issue	Sheet	1/1

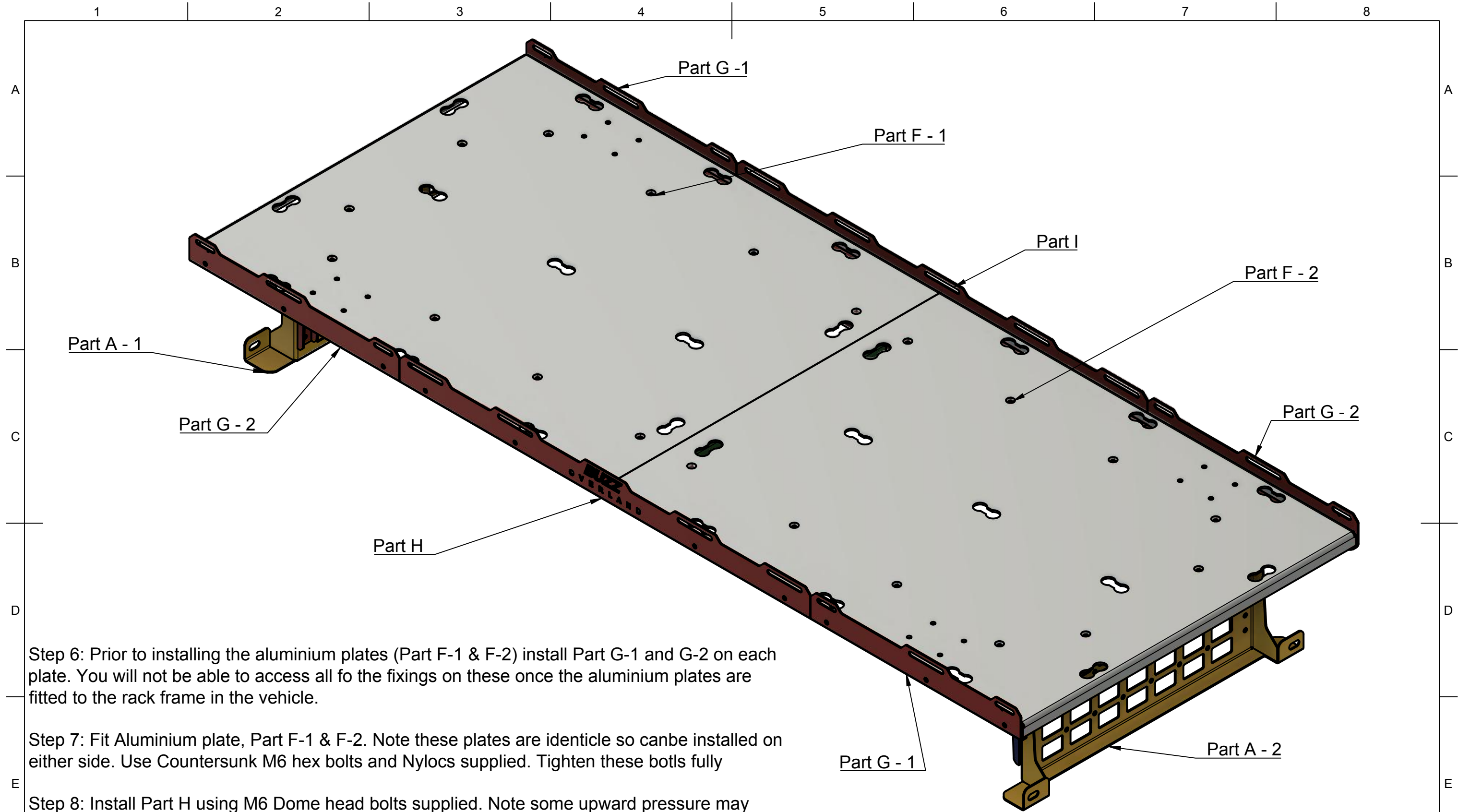


Step 4: Install Part E- 2 & E-3 with M6 x 16mm Dome head bolts and Nylocs supplied. DO NOT TIGHTEN YET

Step 5: Install Part E-1 & E-4 with M6 x 16mm Dome head bolts and Nylocs supplied. DO NOT TIGHTEN YET

Refer to next drawing IG-BR Assembly step 6-10

Dept.	Technical reference	Created by Ryan Thomson 20/09/2023	Approved by
		Document type	Document status
		Title IG-BR Assembly Step 4 - 5	DWG No.
Rev.	Date of issue	Sheet 1/1	



Step 6: Prior to installing the aluminium plates (Part F-1 & F-2) install Part G-1 and G-2 on each plate. You will not be able to access all of the fixings on these once the aluminium plates are fitted to the rack frame in the vehicle.

Step 7: Fit Aluminium plate, Part F-1 & F-2. Note these plates are identical so can be installed on either side. Use Countersunk M6 hex bolts and Nylocs supplied. Tighten these bolts fully

Step 8: Install Part H using M6 Dome head bolts supplied. Note some upward pressure may need to be applied to the underside of the bracket to allow the holes to line up. Once all four M6 bolts are installed tighten fully.

Step 9: Install Part I using M6 Dome head bolts supplied. Note some upward pressure may need to be applied to the underside of the rack to allow the holes to line up. Once all six M6 bolts are installed tighten fully. The rack should now be sitting level.

Step 10: Tighten fully the fasteners on the underside of the rack.

Dept.	Technical reference	Created by Ryan Thomson 20/09/2023	Approved by
		Document type	Document status
		Title IG-BR Assembly Step 6 - 10	DWG No.
		Rev.	Date of issue
			Sheet 1/1