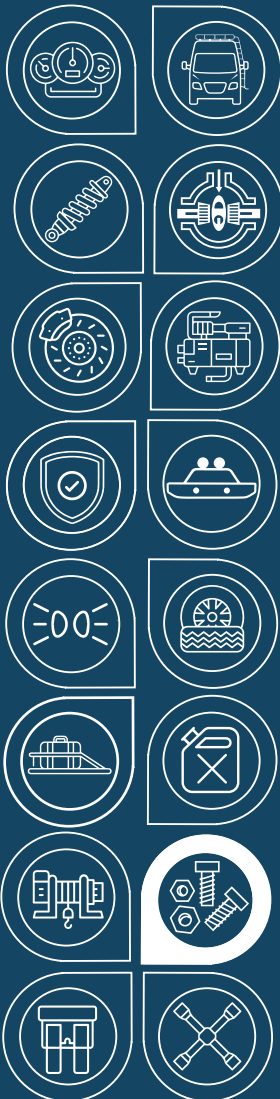




**AGILE
OFFROAD**
SMARTER THAN DIRT



INSTALLATION GUIDE

INEOS Grenadier Driver and Passenger Side
A-Pillar Grab Handle Mount by Agile Offroad

AO-L6G-1-1

INSTALLATION GUIDE

ENHANCED FUNCTIONALITY & SEAMLESS INTEGRATION

INEOS Grenadier Driver and Passenger Side A-Pillar Grab Handle Mount by Agile Offroad



INEOS Grenadier Driver and Passenger Side A-Pillar Grab Handle Mount by Agile Offroad is a precision multi-purpose grab handle designed with an integrated front slot which enables you to use RAM style mounts to mount your favorite device in an ideal location. Add a driver side a-pillar grab handle! The Grenadier does not come factory with a driver side grab handle but the bolt holes are included just below the a-pillar panel making for a easy installation and a great upgrade. These grab handles will fit either side, are constructed from 6061 T6 billet aluminum and include a color & texture matched powder coat finish for a OEM factory look and feel.

SKU

AO-I6G-1-1

PARTS INCLUDED

1 x AO A-Pillar Grab Handle

2 x M6-1.0 x 40mm Bolts

1 x Template

TOOL NEEDED

T20 Torx Bit

T30 Torx Bit

½" Drill Bit

Reciprocating Saw

Panel Removal Tool

File

Masking Tape

Marker

INSTALLATION TIME

1 Hour

INSTALLATION GUIDE



1. The AO A-Pillar Grab Handle is designed to work on both the driver and passenger sides. These instructions are for installing the Grab Handle on the driver side w/o the OEM factory grab Handle.



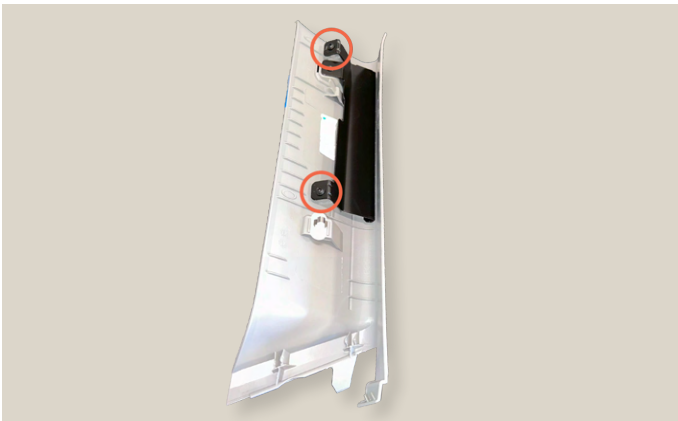
2. Use a panel removal tool to remove the a-pillar screw cover.



3. Use a T30 Torx bit to remove the panel screw.



4. Remove the panel by pulling straight back. **Note: The a-pillar comes from the factory with existing thread bosses.**

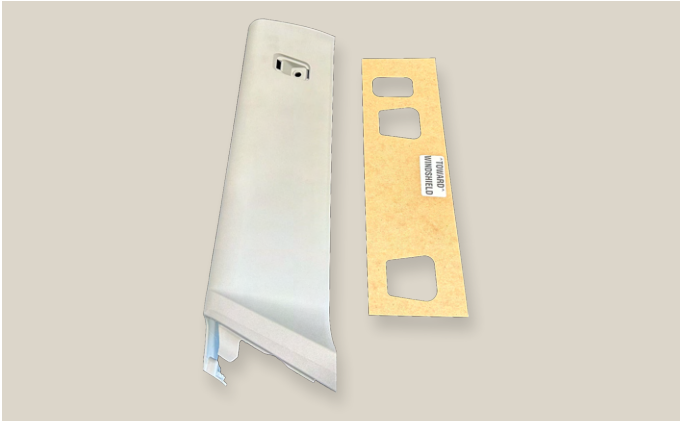


5. Use a T20 Torx bit to remove the rear panel support bracket off the a-pillar panel.

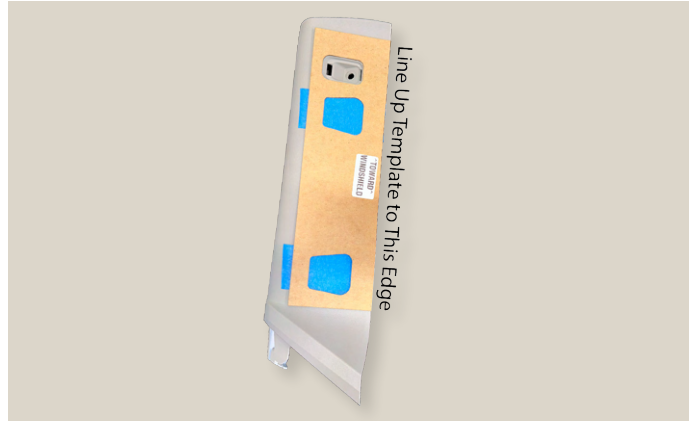


6. Panel shown with support bracket removed.

INSTALLATION GUIDE



7. Position the supplied template. **Note: The template is labeled "Toward Windshield". Toward Windshield side must be lined up on the a-pillar panel windshield edge.**



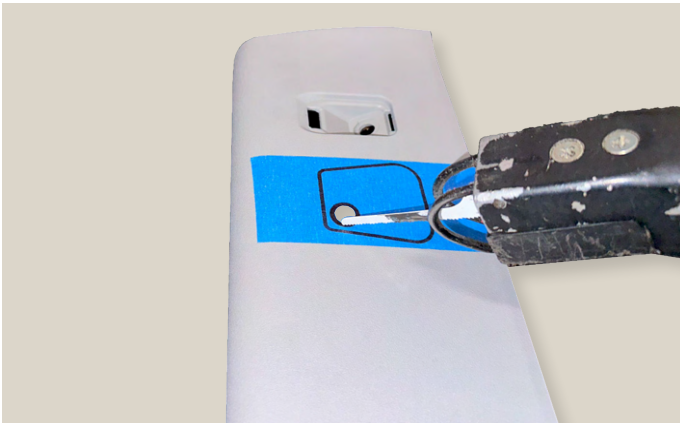
8. Place a couple of pieces of masking tape on a-pillar panel. Line up template to the a-pillar panel windshield edge and the screw hole opening. Use a marker pen to mark the cut locations.



9. Remove the template then draw a 1/2" circle as shown.



10. Drill two 1/2" holes as shown at the previously drawn circles.



11. Use a reciprocating saw (or other suitable tool) to cut out the marked hole locations. Start the cutting at the 1/2" holes. **Note: Cut at the inside of the marker line.**



12. Use a file to clean the holes then remove masking tape. Re-install the rear support bracket removed in Step 5.

INSTALLATION GUIDE



13. Re-install the a-pillar panel using the factory screw. Re-install the screw cover.



14. Install the AO A-Pillar Grab Handle using the supplied 6mm bolts. **Torque to 4 ft/lbs.**

INEOS
GRENA DIER



AGILE
OFFROAD



Interior



Exterior



Suspension



Air Locker &
Drivetrain



Steering &
Brakes



Air
Compressors



Armor &
Protection



Bumpers



Lighting



Wheels &
Tires



Storage &
Racks



Water &
Fuel Tanks



Winches &
Recovery



Replacement
Parts &
Accessories



Electrical



Tools



agileoffroad.com



info@agileoffroad.com



619-328-1297